



GREEN ELECTRONICS



MPP

Terminal Blocks and Connectors for Printed Circuit Boards



ISO
9001



ISO
14001



BS OHSAS
18001:2007



SAURO[®]
ELECTRONIC CONNECTORS

Características funcionales



Tipo de capacidad:
baja



Color estándar:
verde



Altitud:
39 mm (15.35 in)



Máxima sección de cable homologada:
rígido: 35 mm² (CE); 2 AWG (UL)
flexible: 25 mm² (CE); 3 AWG (UL)

Apertura del cajetín:
8.7 x 8.2 mm (3.43 x 3.23 in)



Versiónes:

apilable
modular
bridas de fijación

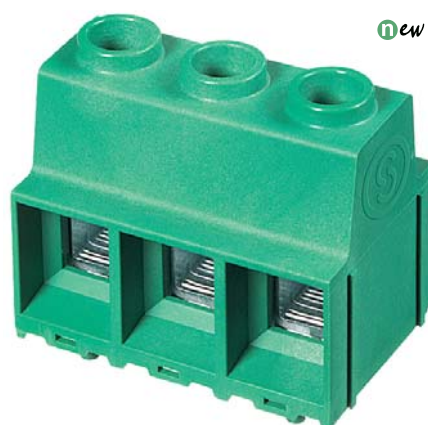
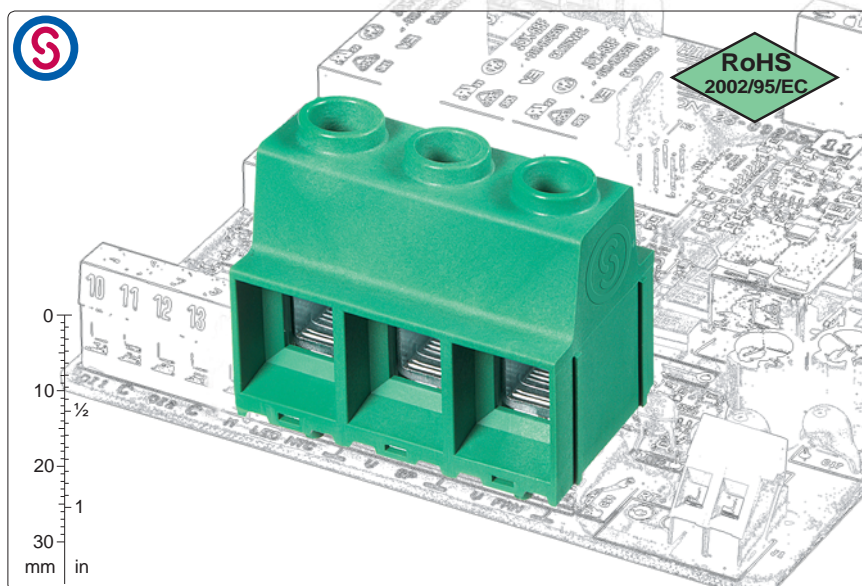
**Numero máximo de polos
en cuerpos monolíticos:**
de 2 hasta 9



Pasos:
Pulgados 15 mm
(.591 in)



Soldable a temperatura hasta
270°C / 518°F



S 270°C
paso 15 mm
versión recto, modular, con doble pin



S 270°C
paso 15 mm
versión recto, modular, con base

Breve descripción

El Borne serie **MPP** es caracterizado por una grande capacidad de conexión, permitiendo el cableado de cables hasta **35 mm² (2 AWG)** y por eso una capacidad de corriente que llega hasta **125A** aprobados.

Es disponible en paso métrico de 15mm (.591 in), con cuerpo monolíticos desde 2 hasta 12 vias, en las versiones apilable, modular o con bridas de fijación al PCB, con inserción del cable paralelo a la placa y con anclas de polarizaciones para la prevención de montaje manual no correcto.

Hay la posibilidad de apilar o componer en el circuito impreso los bornes bases monolíticas para obtener cualquier numero de polos sin perder el paso; disfrutando esta peculiaridad hay la posibilidad de gestionar un almacenaje mínimo de bornes bases.

Los embalajes como kit permiten una simplificación de la gestión del

producto, del almacén y del montaje, por que con un código sólo se reciben más versiones, se reducen de manera significativa los part-numbers y se reducen los riesgos de error.

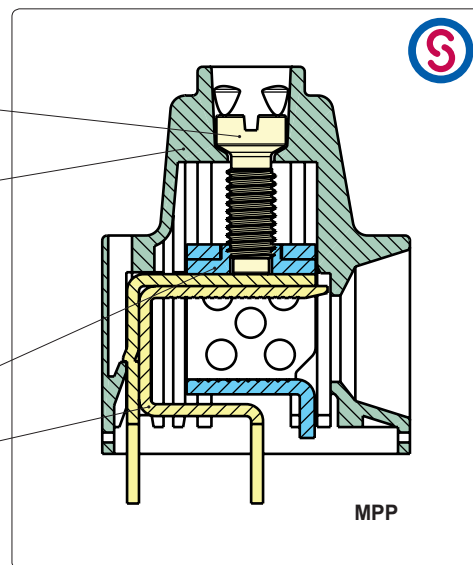
MPP con anclas de polarización

El Borne MPP recto es disponible también con anclas de fijación y de polarización a la placa, incorporadas en el cuerpo plástico.

Esta solución permite de descargar el par de apriete a placa y de prevenir montaje no correcto del borne, superando así las prescripciones más restrictivas pedidas por las Normas Internacionales (VDE).

Características de los componentes

- Tornillo M5 en aleación de cobre niquelado.
- Cuerpo plástico en poliamida
Color estandar: VERDE.
Autoextinción en clase V0 según UL94.
Resistente a los disolventes clorados
exentos de fósforo, dioxina y
halógenos perjudiciales para la salud
- Cajetín en aleación de cobre niquelado.
- Pin en aleación de cobre estañado,
facilmente soldable, sin plomo.



Características mecánicas





Par de apriete recomendado	2.1/2.5 Nm (18.59/22.13 lbf in)
Espesor de la placa:	max. 2.4 mm (.094 in)
Diámetro taladro:	min. 1.1 mm (.043 in)
Longitud a desaislar	10.5 ÷ 11.5 mm (.41 ÷ .45 in)
Intervalo de temperatura de utilización	-40 °C ÷ +110 °C (-40 °F ÷ +230 °F)
Categoría climática	40/110/21 según 60068-1

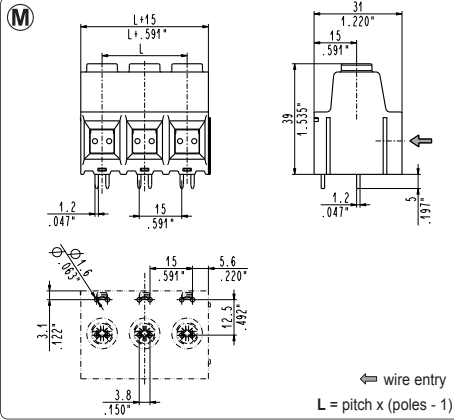
Características eléctricas*

Sección de cable rígido	20 ÷ 1 AWG (UL)* 0.5 ÷ 35 mm ² (IEC EN)*
Sección de cable flexible	20 ÷ 1 AWG (UL)* 0.5 ÷ 25 mm ² (IEC EN)*
Tensión nominal, paso 15 mm (.591 in)	1000 V (IEC EN)*
Corriente nominal	135 A (UL)*
Resistencia de contacto	<15 mΩ
Resistencia de aislamiento	>10 ⁹ Ω (500V DC)

*Todos los datos de arriba son los más altos entre los homologados.
V voltaje, I valores de corriente y apriete estan liados a las normas que tienen que aplicarse al producto y a su uso.

Homologaciones

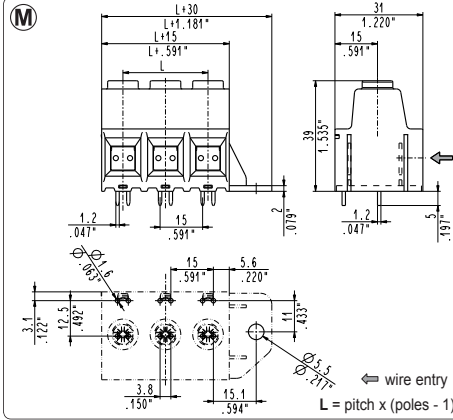
	IEC: EN 60998	1000 V - T 110 - 125 A - 35 mm ² rígido (115 A - 25 mm ² flexible) por pasos 15 mm
	UL: file E167473	600 V - 135 A factory wiring (130 A field wiring) - 1 AWG - 2.5 Nm por pasos 15 mm Los valores de aplicación para equipo final tienen que ser según las normas UL y a éste aplicables.
	VDE: pendiente	1000 V - 125 A - T 110 - 35 mm ² por pasos 15 mm
	IMQ: pendiente	750 V - T 110 - 125 A - 35 mm ² rígido (115 A - 25 mm ² flexible) por pasos 15 mm



MPP_D0Q straight, modular

15 mm / .591" pitch

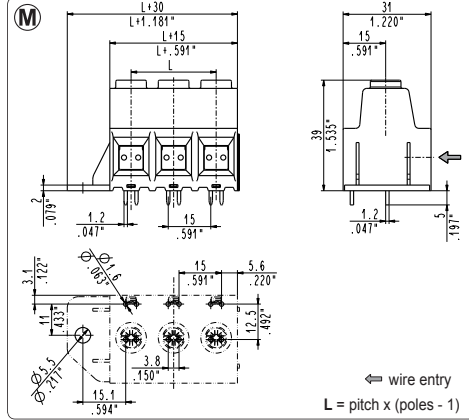
Poles	STD Code	Pcs/pack.	W [kg]*	Pcs/Ind.**	W [kg]*
02	MPP02D0Q	50	2,20	250	11,00
03	MPP03D0Q	40	2,64	180	11,88
04	MPP04D0Q	30	2,64	125	11,00
05	MPP05D0Q	25	2,75	100	11,00
06	MPP06D0Q	20	2,64	75	9,90
07	MPP07D0Q	15	2,31	75	11,55
08	MPP08D0Q	15	2,64	50	8,80
09	MPP09D0Q	10	1,98	50	9,90
10	MPP10D0Q	10	2,20	50	11,00
11	MPP11D0Q	10	2,42	50	12,10
12	MPP12D0Q	10	2,64	40	10,56



MPP_D0Q-00D straight, modular, mounting flanges

15 mm / .591" pitch

Poles	STD Code	Pcs/pack.	W [kg]*	Pcs/Ind.**	W [kg]*
01	MPP01D0Q-00D	50	1,10	500	11,00
02	MPP02D0Q-00D	40	1,76	250	11,00
03	MPP03D0Q-00D	30	1,98	175	11,55
04	MPP04D0Q-00D	25	2,20	125	11,00
05	MPP05D0Q-00D	20	2,20	100	11,00
06	MPP06D0Q-00D	15	1,98	75	9,90
07	MPP07D0Q-00D	15	2,31	75	11,55
08	MPP08D0Q-00D	10	1,76	50	8,80
09	MPP09D0Q-00D	10	1,98	50	9,90
10	MPP10D0Q-00D	10	2,20	50	11,00
11	MPP11D0Q-00D	10	2,42	40	9,68
12	MPP12D0Q-00D	10	2,64	40	10,56

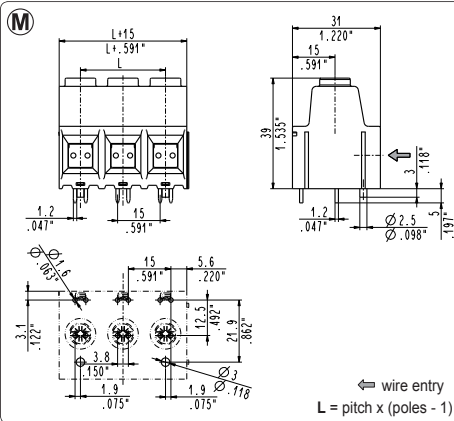


MPP_D0Q-00S straight, modular, mounting flanges

15 mm / .591" pitch

Poles	STD Code	Pcs/pack.	W [kg]*	Pcs/Ind.**	W [kg]*
01	MPP01D0Q-00S	50	1,10	500	11,00
02	MPP02D0Q-00S	40	1,76	250	11,00
03	MPP03D0Q-00S	30	1,98	175	11,55
04	MPP04D0Q-00S	25	2,20	125	11,00
05	MPP05D0Q-00S	20	2,20	100	11,00
06	MPP06D0Q-00S	15	1,98	75	9,90
07	MPP07D0Q-00S	15	2,31	75	11,55
08	MPP08D0Q-00S	10	1,76	50	8,80
09	MPP09D0Q-00S	10	1,98	50	9,90
10	MPP10D0Q-00S	10	2,20	50	11,00
11	MPP11D0Q-00S	10	2,42	40	9,68
12	MPP12D0Q-00S	10	2,64	40	10,56

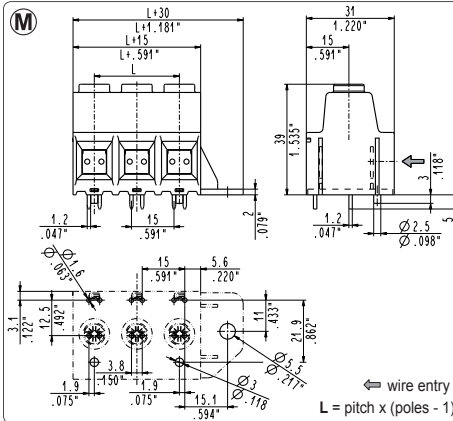
TERMINAL BLOCKS



MPP_D0Q-0000P straight, modular, peps

15 mm / .591" pitch

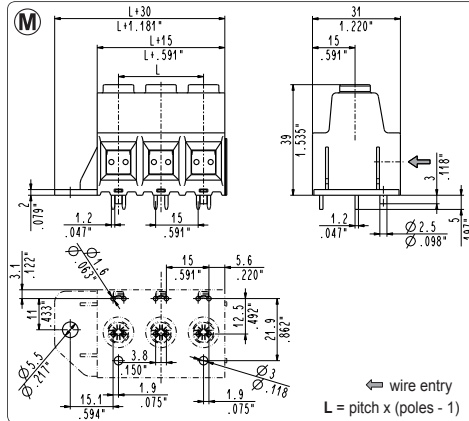
Poles	STD Code	Pcs/pack.	W [kg]*	Pcs/Ind.**	W [kg]*
02	MPP02D0Q-0000P	50	2,20	250	11,00
03	MPP03D0Q-0000P	40	2,64	180	11,88
04	MPP04D0Q-0000P	30	2,64	125	11,00
05	MPP05D0Q-0000P	25	2,75	100	11,00
06	MPP06D0Q-0000P	20	2,64	75	9,90
07	MPP07D0Q-0000P	15	2,31	75	11,55
08	MPP08D0Q-0000P	15	2,64	50	8,80
09	MPP09D0Q-0000P	10	1,98	50	9,90
10	MPP10D0Q-0000P	10	2,20	50	11,00
11	MPP11D0Q-0000P	10	2,42	50	12,10
12	MPP12D0Q-0000P	10	2,64	40	10,56



MPP_D0Q-00D0P straight, right mounting flanges, peps

15 mm / .591" pitch

Poles	STD Code	Pcs/pack.	W [kg]*	Pcs/Ind.**	W [kg]*
01	MPP01D0Q-00D0P	50	1,10	500	11,00
02	MPP02D0Q-00D0P	40	1,76	250	11,00
03	MPP03D0Q-00D0P	30	1,98	175	11,55
04	MPP04D0Q-00D0P	25	2,20	125	11,00
05	MPP05D0Q-00D0P	20	2,20	100	11,00
06	MPP06D0Q-00D0P	15	1,98	75	9,90
07	MPP07D0Q-00D0P	15	2,31	75	11,55
08	MPP08D0Q-00D0P	10	1,76	50	8,80
09	MPP09D0Q-00D0P	10	1,98	50	9,90
10	MPP10D0Q-00D0P	10	2,20	50	11,00
11	MPP11D0Q-00D0P	10	2,42	40	9,68
12	MPP12D0Q-00D0P	10	2,64	40	10,56



MPP_D0Q-00S0P straight, left mounting flanges, peps

15 mm / .591" pitch

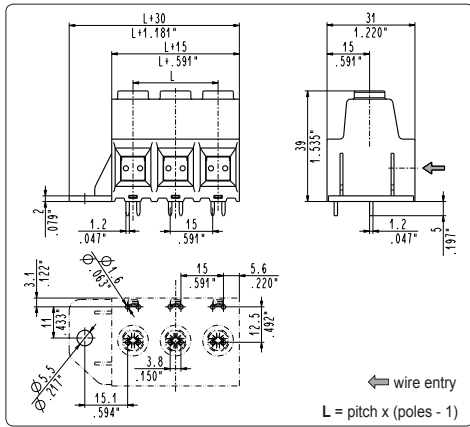
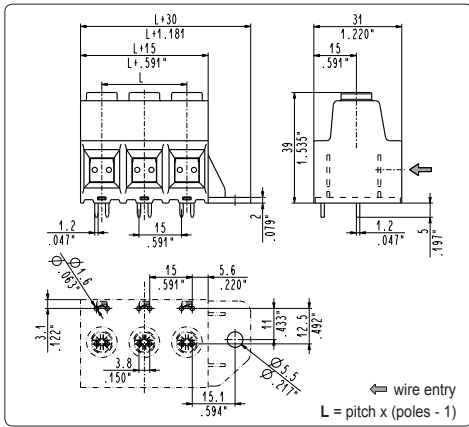
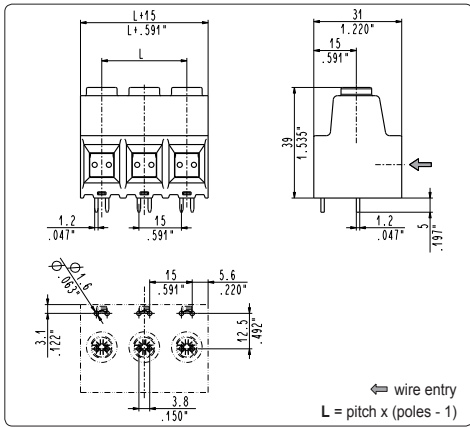
Poles	STD Code	Pcs/pack.	W [kg]*	Pcs/Ind.**	W [kg]*
01	MPP01D0Q-00S0P	50	1,10	500	11,00
02	MPP02D0Q-00S0P	40	1,76	250	11,00
03	MPP03D0Q-00S0P	30	1,98	175	11,55
04	MPP04D0Q-00S0P	25	2,20	125	11,00
05	MPP05D0Q-00S0P	20	2,20	100	11,00
06	MPP06D0Q-00S0P	15	1,98	75	9,90
07	MPP07D0Q-00S0P	15	2,31	75	11,55
08	MPP08D0Q-00S0P	10	1,76	50	8,80
09	MPP09D0Q-00S0P	10	1,98	50	9,90
10	MPP10D0Q-00S0P	10	2,20	50	11,00
11	MPP11D0Q-00S0P	10	2,42	40	9,68
12	MPP12D0Q-00S0P	10	2,64	40	10,56

WWW.SAURO.NET

SAURO ELECTRONIC CONNECTORS

*W [kg]: approximate weight per box in kg

**Industrial packaging: add "-00000E" at standard code



MPP_DAQ straight, side stackable

15 mm / .591" pitch

Poles	STD Code	Pcs/pack.	W [kg]*	Pcs/Ind.**	W [kg]*
02	MPP02DAQ	50	2,20	250	11,00
03	MPP03DAQ	40	2,64	180	11,88
04	MPP04DAQ	30	2,64	125	11,00
05	MPP05DAQ	25	2,75	100	11,00
06	MPP06DAQ	20	2,64	75	9,90
07	MPP07DAQ	15	2,31	75	11,55
08	MPP08DAQ	15	2,64	50	8,80
09	MPP09DAQ	10	1,98	50	9,90
10	MPP10DAQ	10	2,20	50	11,00
11	MPP11DAQ	10	2,42	50	12,10
12	MPP12DAQ	10	2,64	40	10,56

MPP_DAQ-00D straight, side stackable, mounting flanges

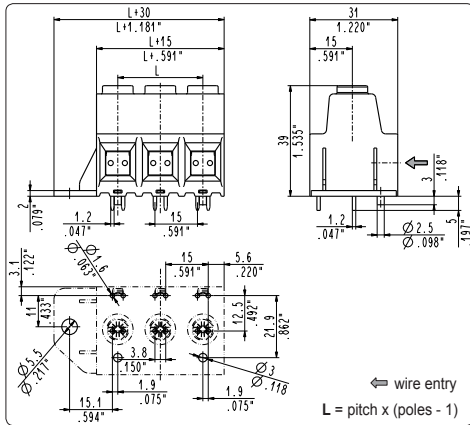
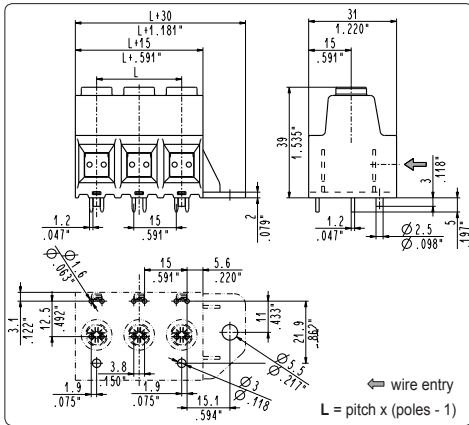
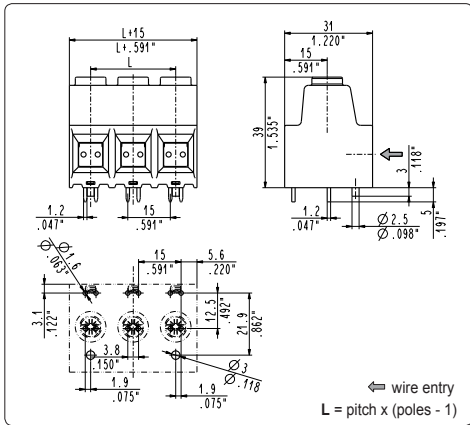
15 mm / .591" pitch

Poles	STD Code	Pcs/pack.	W [kg]*	Pcs/Ind.**	W [kg]*
01	MPP01DAQ-00D	50	1,10	500	11,00
02	MPP02DAQ-00D	40	1,76	250	11,00
03	MPP03DAQ-00D	30	1,98	175	11,55
04	MPP04DAQ-00D	25	2,20	125	11,00
05	MPP05DAQ-00D	20	2,20	100	11,00
06	MPP06DAQ-00D	15	1,98	75	9,90
07	MPP07DAQ-00D	15	2,31	75	11,55
08	MPP08DAQ-00D	10	1,76	50	8,80
09	MPP09DAQ-00D	10	1,98	50	9,90
10	MPP10DAQ-00D	10	2,20	50	11,00
11	MPP11DAQ-00D	10	2,42	40	9,68
12	MPP12DAQ-00D	10	2,64	40	10,55

MPP_DAQ-00S straight, side stackable, mounting flanges

15 mm / .591" pitch

Poles	STD Code	Pcs/pack.	W [kg]*	Pcs/Ind.**	W [kg]*
01	MPP01DAQ-00S	50	1,10	500	11,00
02	MPP02DAQ-00S	40	1,76	250	11,00
03	MPP03DAQ-00S	30	1,98	175	11,55
04	MPP04DAQ-00S	25	2,20	125	11,00
05	MPP05DAQ-00S	20	2,20	100	11,00
06	MPP06DAQ-00S	15	1,98	75	9,90
07	MPP07DAQ-00S	15	2,31	75	11,55
08	MPP08DAQ-00S	10	1,76	50	8,80
09	MPP09DAQ-00S	10	1,98	50	9,90
10	MPP10DAQ-00S	10	2,20	50	11,00
11	MPP11DAQ-00S	10	2,42	40	9,68
12	MPP12DAQ-00S	10	2,64	40	10,55



MPP_DAQ-0000P straight, side stackable, peps

15 mm / .591" pitch

Poles	STD Code	Pcs/pack.	W [kg]*	Pcs/Ind.**	W [kg]*
02	MPP02DAQ-0000P	50	2,20	250	11,00
03	MPP03DAQ-0000P	40	2,64	180	11,88
04	MPP04DAQ-0000P	30	2,64	125	11,00
05	MPP05DAQ-0000P	25	2,75	100	11,00
06	MPP06DAQ-0000P	20	2,64	75	9,90
07	MPP07DAQ-0000P	15	2,31	75	11,55
08	MPP08DAQ-0000P	15	2,64	50	8,80
09	MPP09DAQ-0000P	10	1,98	50	9,90
10	MPP10DAQ-0000P	10	2,20	50	11,00
11	MPP11DAQ-0000P	10	2,42	50	12,10
12	MPP12DAQ-0000P	10	2,64	40	10,56

MPP_DAQ-00D0P straight, side stackable, flanges, peps

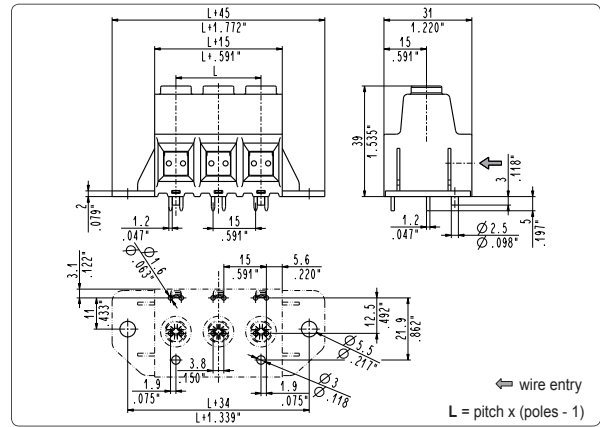
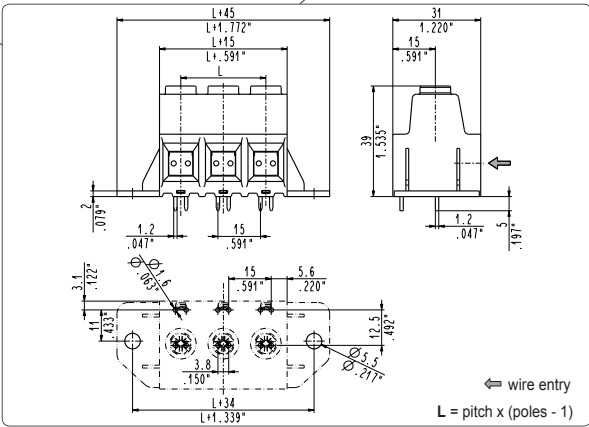
15 mm / .591" pitch

Poles	STD Code	Pcs/pack.	W [kg]*	Pcs/Ind.**	W [kg]*
01	MPP01DAQ-00D0P	50	1,10	500	11,00
02	MPP02DAQ-00D0P	40	1,76	250	11,00
03	MPP03DAQ-00D0P	30	1,98	175	11,55
04	MPP04DAQ-00D0P	25	2,20	125	11,00
05	MPP05DAQ-00D0P	20	2,20	100	11,00
06	MPP06DAQ-00D0P	15	1,98	75	9,90
07	MPP07DAQ-00D0P	15	2,31	75	11,55
08	MPP08DAQ-00D0P	10	1,76	50	8,80
09	MPP09DAQ-00D0P	10	1,98	50	9,90
10	MPP10DAQ-00D0P	10	2,20	50	11,00
11	MPP11DAQ-00D0P	10	2,42	40	9,68
12	MPP12DAQ-00D0P	10	2,64	40	10,55

MPP_DAQ-00S0P straight, side stackable, flanges, peps

15 mm / .591" pitch

Poles	STD Code	Pcs/pack.	W [kg]*	Pcs/Ind.**	W [kg]*
01	MPP01DAQ-00S0P	50	1,10	500	11,00
02	MPP02DAQ-00S0P	40	1,76	250	11,00
03	MPP03DAQ-00S0P	30	1,98	175	11,55
04	MPP04DAQ-00S0P	25	2,20	125	11,00
05	MPP05DAQ-00S0P	20	2,20	100	11,00
06	MPP06DAQ-00S0P	15	1,98	75	9,90
07	MPP07DAQ-00S0P	15	2,31	75	11,55
08	MPP08DAQ-00S0P	10	1,76	50	8,80
09	MPP09DAQ-00S0P	10	1,98	50	9,90
10	MPP10DAQ-00S0P	10	2,20	50	11,00
11	MPP11DAQ-00S0P	10	2,42	40	9,68
12	MPP12DAQ-00S0P	10	2,64	40	10,55



MPP_DVQ straight, mounting flanges

15 mm / .591" pitch

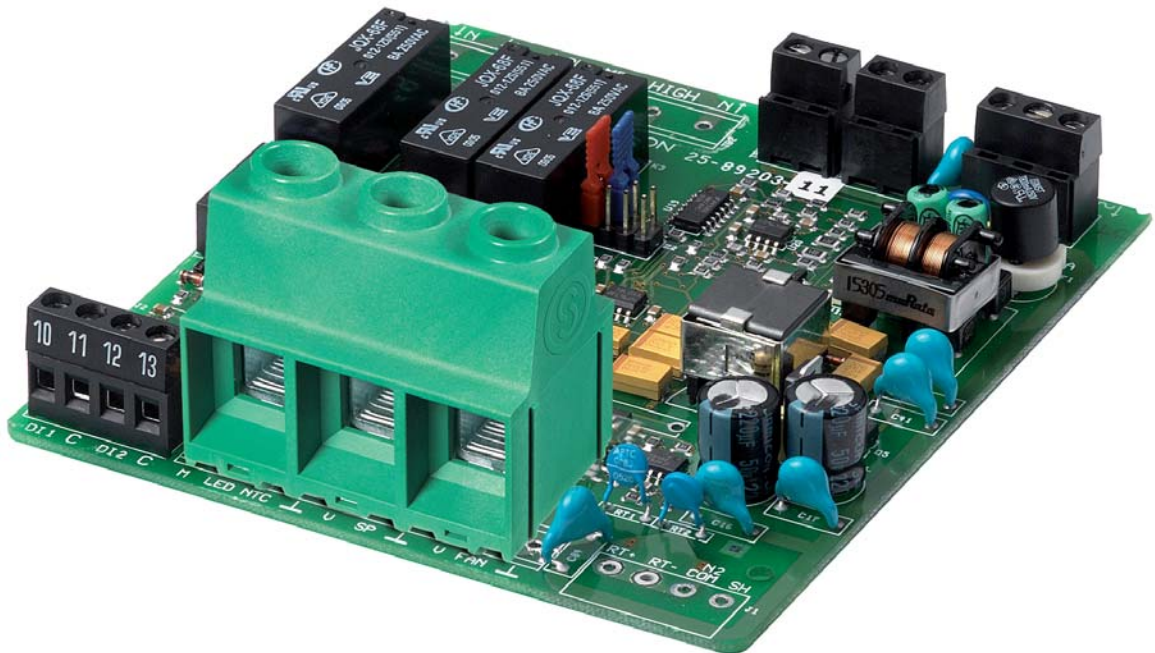
Poles	STD Code	Pcs/pack.	W [kg]*	Pcs/Ind.**	W [kg]*
01	MPP01DVQ	50	1,10	500	11,07
02	MPP02DVQ	40	1,76	250	11,03
03	MPP03DVQ	30	1,98	175	11,52
04	MPP04DVQ	25	2,20	125	11,02
05	MPP05DVQ	20	2,20	100	11,01
06	MPP06DVQ	15	1,98	75	9,91
07	MPP07DVQ	15	2,31	75	11,56
08	MPP08DVQ	10	1,76	50	8,81
09	MPP09DVQ	10	1,98	50	9,91
10	MPP10DVQ	10	2,20	50	11,00
11	MPP11DVQ	10	2,42	40	9,68
12	MPP12DVQ	10	2,64	40	10,55

MPP_DVQ-0000P straight, mounting flanges, pegs

15 mm / .591" pitch

Poles	STD Code	Pcs/pack.	W [kg]*	Pcs/Ind.**	W [kg]*
01	MPP01DVQ-0000P	50	1,10	500	11,07
02	MPP02DVQ-0000P	40	1,76	250	11,03
03	MPP03DVQ-0000P	30	1,98	175	11,52
04	MPP04DVQ-0000P	25	2,20	125	11,02
05	MPP05DVQ-0000P	20	2,20	100	11,01
06	MPP06DVQ-0000P	15	1,98	75	9,91
07	MPP07DVQ-0000P	15	2,31	75	11,56
08	MPP08DVQ-0000P	10	1,76	50	8,81
09	MPP09DVQ-0000P	10	1,98	50	9,91
10	MPP10DVQ-0000P	10	2,20	50	11,00
11	MPP11DVQ-0000P	10	2,42	40	9,68
12	MPP12DVQ-0000P	10	2,64	40	10,55

Example of Application



*W [kg]: approximate weight per box in kg

**Industrial packaging: add "-00000E" at standard code

Standard Packages

Each SAURO product is supplied in its Standard Package which contains a fixed number of pieces.

The product must be ordered in a quantity which is equal to the respective Standard Package or a multiple of it.

Visit our web site at www.sauro.net for up-to-date information about the standard quantity.

Industrial Packages

Industrial packages are for large quantities of the same product (code) when it is not convenient to divide the pieces into many boxes. The product code is obtained by adding to the standard code "-00000E".

1/10 of Standard Package

For samples or for small batches SAURO products can be ordered in 1/10 of the Standard Package, which contains about a 1/10 of the pieces of the Standard Package. Surcharge applies.

KANBAN

A further distribution service according to the need (just in time) of the above mentioned Kits or of the standard and industrial packages.

Sample Box

Moreover, a Sample Box is available which includes a selection of terminal blocks and connectors of different configurations in order to learn about SAURO products, or for prototype applications.

Kit Packages

All SAURO products are available in the following kits, which simplifies management of the product (e.g. reduction of part numbers), of the warehouse, of assembly and it also reduces the possibility of making mistakes:

Client PCB Kit: different products, packed together according to assembly needs. The various components are usually packed in a plastic bag.

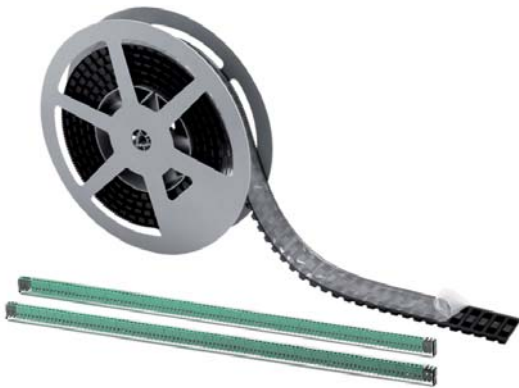
Assembly Kit: as above, but with each single item packed separately in order to optimize the quantity and the assembling on the PCB. Each single item is packed in a large plastic bag, and this is then inserted into a cardboard box which forms the kit.

Ergonomic Kit: with different modular, side-stackable and marked items, so that the subsequent sequential separation optimizes the correspondent assembling on the PCB.

Tape-on-Reel Kit, Tray Kit, Tube Kit: for an automated product feed directly on the assembly line.

Other solutions upon request

Tape-on-Reel & Tube Kit



Tray Kit



Standard package



Industrial package



Ergonomic Kit



PCB Client Kit



Sample Box

